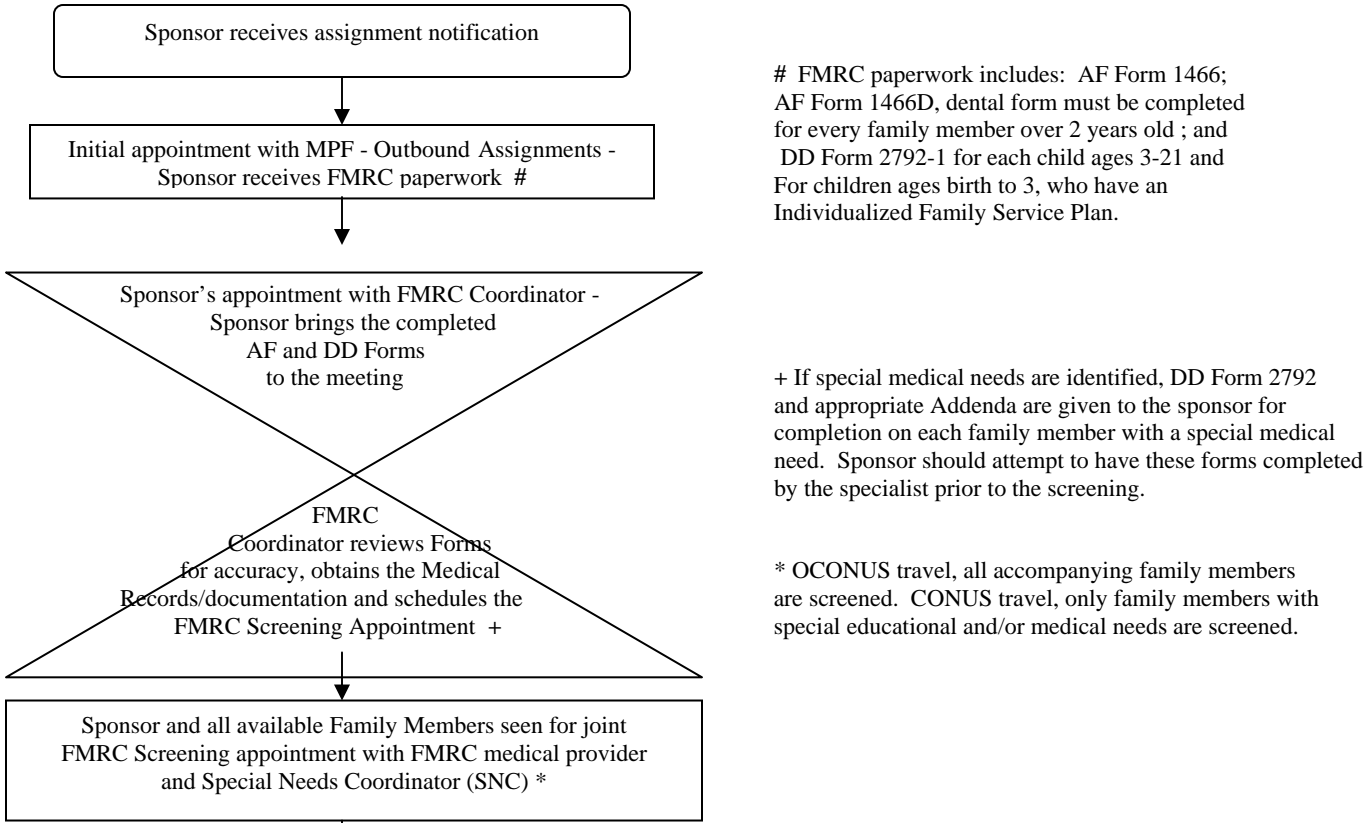


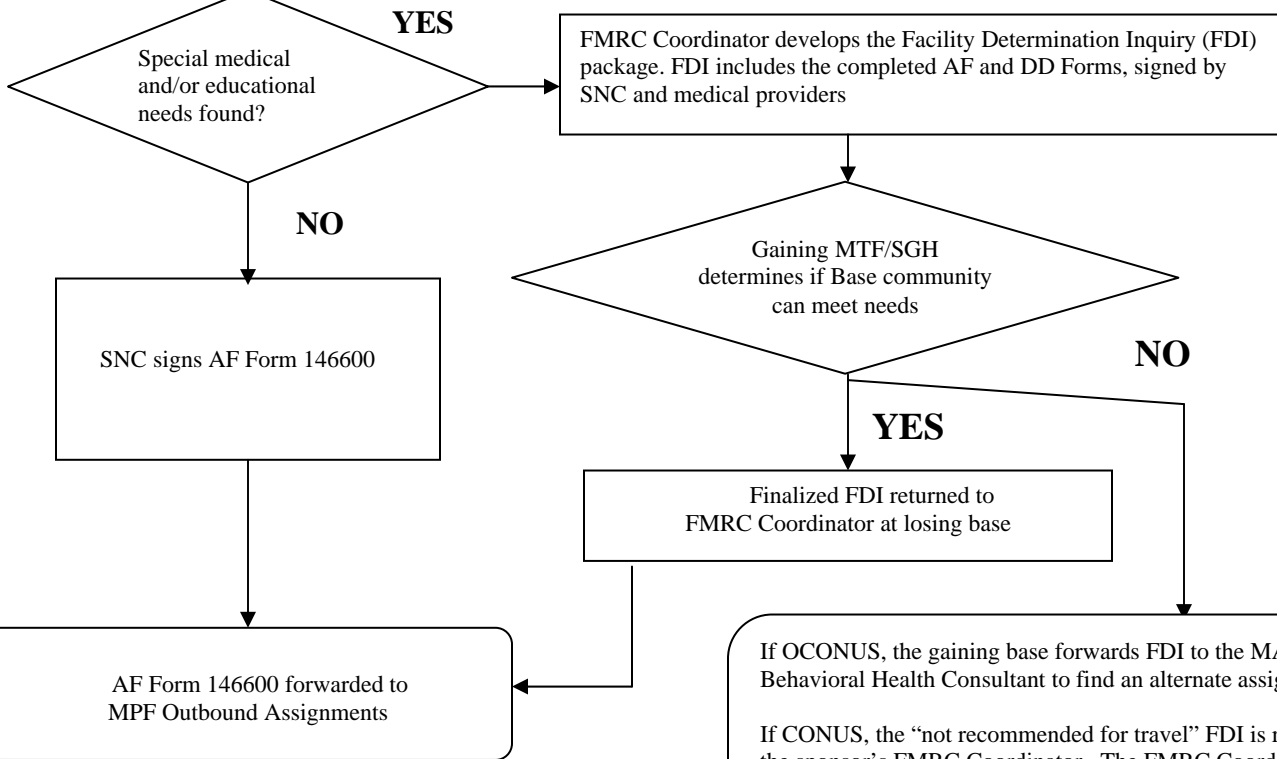
## FAMILY MEMBER RELOCATION CLEARANCE (FMRC) FLOWCHART



# FMRC paperwork includes: AF Form 1466; AF Form 1466D, dental form must be completed for every family member over 2 years old ; and DD Form 2792-1 for each child ages 3-21 and For children ages birth to 3, who have an Individualized Family Service Plan.

+ If special medical needs are identified, DD Form 2792 and appropriate Addenda are given to the sponsor for completion on each family member with a special medical need. Sponsor should attempt to have these forms completed by the specialist prior to the screening.

\* OCONUS travel, all accompanying family members are screened. CONUS travel, only family members with special educational and/or medical needs are screened.



If OCONUS, the gaining base forwards FDI to the MAJCOM Behavioral Health Consultant to find an alternate assignment.  
 If CONUS, the "not recommended for travel" FDI is returned to the sponsor's FMRC Coordinator. The FMRC Coordinator notifies the SNC and the sponsor, then forwards the AF Form 146600 to the MPF.